



General Construction
& Global Drilling

Introduction

The contents of this Company Profile is a brief summary of some achievements and expertise of the Chief Executive Officer, Directors and Managers, who are highly qualified Builders, Engineers, Architects which make up the company Interpacc Pty Limited.

Interpacc Global Constructions is a building company that has a large wealth of experience in construction that spans back 20 years. All key personnel have experience in all types of building and structures and stands ready and able to action any facet of construction work. The company is keen to display its quality and speed of construction which comes from the vast experience that the Key Personnel bring to this company.

Interpacc Pty Limited enjoys an unrestricted builders licence, hence licensed to build at any level of construction.

Interpacc Global Constructions
2014

about us

YOUR vision is OUR vision



Company Structure

COMPANY NAME:	Interpacc Pty. Limited
INCORPORATION DATE:	21st December, 1993
ACN NUMBER:	062 851 496
REGISTERED ADDRESS:	9 Keating Place Denham Court NSW 2565
OPERATIONS ADDRESS:	2/32 Williamson Road Ingleburn NSW 2565
CONTACT DETAILS:	Tel: +612 9829 2777 Fax: +612 9829 2772
COMPANY ACTIVITIES:	General Construction

COMPANY

DIRECTOR / SECRETARY / CEO: Karl Damien

MANAGEMENT: Karl Damien
Stephen Jones
John Messih
Sam Bassilious
Walid El Hady

COMPANY ACCOUNTANT: Logic Accountants and Tax Professionals.
74 Coward Street
Mascot NSW 2020
Ph +612 8338 0220 Fax +612 8338 8684
Web: www.logicaccountants.com.au

COMPANY LAWYERS: Nationwide Lawyers
339A Macquarie Street,
Liverpool. 2170. Sydney. NSW. Australia
Tel: +612 9824-0111 Fax: +612 9824-0222
Web: nationwidelawyers.com.au

About Us

Interpacc's prime function is the construction of roads using the latest technology, residential and commercial buildings including blocks of units, and high rises. We also source many building materials from anywhere in the world.

Interpacc is a leading provider of quality contract works to the Australian construction industry. We specialise in civil, construction, and demolition works, as well as having considerable experience in project management and labour supply. We pride ourselves in our unique family-oriented approach, impeccable safety record, and excellent standards of workmanship.

Commercial and residential clients make up a large proportion of our customers. The often challenging nature and specific requirements of such projects has enabled Interpacc to build a strong reputation for managing complex works on operational sites, as well as in regional and remote locations throughout Australia.

The team at Interpacc consists of qualified friendly professional people who are there to provide you with attentive service from the commencement to completion of your project. During extension construction, most clients still live in the home and therefore require consistent communication and reliable service in order to achieve a positive building experience.

Interpacc has been in the construction industry for over 20 years. During this time Interpacc has successfully completed many commercial, and residential buildings, as well as several public projects including building roads of up to 500 km's.

Reliable roads, dirt cheap

Interpacc uses B3Bond when laying roads and highways. B3Bond products can be used to build, maintain or repair B3Bond roads or conventional roads, as well as hardstand areas and pavements. In each situation, an ISB product mix is developed using in situ-materials.

Types of Roads which we work with are:

- > Rural Roads
- > Urban Roads
- > Major Highways
- > Freeways
- > Haulage roads

Road Maintenance

- > Minor Repairs
- > Forming the sub-base layer of conventional roads
- > Replacing asphalt or bituman roads

Commercial

- > Haulage Roads
- > Tarmac
- > Hardstand areas
- > Soil and round stabilization
- > Dust suppression
- > Water repellent pavements

B3Bond has a unique dust suppressive, strength and environmentally friendly traits of the B3Bond products make them ideal for use in the following industries.

- > Mining and resources
- > Forestry
- > Civil construction
- > Rail



Karl Damien



Karl Damien - Managing Director / CEO

A Company Director and the Business Manager with extensive experience in Insurance, Finance, Banking and Importation. Also plays a prominent role in sourcing construction contracts and development sites.

After working in various administrative companies, Karl explored the fields of insurance and was Accounts Department Manager for ING Insurance, which the key role was in charge of analysis of expenditure, staff wages and remuneration. Ensuring all expenditure was inline with company budgets and all the human resources were correctly distributed and reconciled.

Later furthering his career in banking, with Westpac Banking Corporation as Regional Manager for the issuing bank loans. Ensuring profitability for assigned region (Gold Coast) by directing Bank Managers and respective staff to following budgeting guide lines and marketing of existing and new products.

Later as Self employed as a Real Estate Developer which included roles as sourcing and purchase development sites, construct dwellings, marketing and sales of residential homes. Sourcing raw land suitable for new residential dwellings in a developing area (South West Region of Sydney).

Sub-divide and liaise with government departments and respective councils. Ensuring all facilities such as electricity, water, sewerage where facilitated for each development. Liaise with Lawyers, surveyors and engineers. On completion of each sub-division, lead a successful marketing campaign to ensure quick and smooth sales at acceptable profitability margins.

After the wealth of experience in Finance and Development went on to join forces with this company to be the business manager of finance and importation and purchasing manager for construction materials and other products.

Stephen Jones



Stephen Jones - Projects Director

Stephen has 25 years experience in architectural design. After completing tertiary studies, Stephen began work in various civil design companies. Pursuing a passion for architecture, he then worked for various architectural practices and a design and construction company in hospitality, where he performed the role of design manager and project architect on various large-scale projects.

With this experience Stephen joined forces with other associates, and formed his own architectural planning and design company in 1992, working closely with property developers on a range of medium to large projects including Beachfront High-rise, Hotels and a large resort in Asia.

The company's approach is to provide a collaborative interactive design process that provides a range of options to move forward with consensus to successful completion. A commitment to environmentally responsible design is maintained whilst taking a holistic approach; the result is an architectural planning project with social and aesthetic integrity.

Due to a 20 year long standing working relationship and mutual respect between Michael Hadad and Stephen Jones the decision was made to join forces between Stephen Jones Associates and Cherco Pty. Limited

Stephen Jones

project experience

Commercial – Medium and High-rise

Resort Complex Designs

House & Land sub-divisions and Apartment development

Residential – High-rise townhouses and homes

Residential – Single and cluster dwellings

John Messih



John Messih - Project Manager

In-house Structural and Civil Engineer.

Works include roads, substations, bridges and wharves.

Experience as a Project Manager and Structural Engineer has allowed John to work in the design, documentation and management of different projects throughout Australia, the United Kingdom and Mauritius, South Africa. Due to this varied experience John has the ability to change his role from a design position to a managerial position depending on work requirements.

Key Skills and Experience

Site engineer in Australia and overseas

Undertaking project briefs

Engaging and managing various consultants

Providing scope of works

Undertaking site and project meetings

Project reviews

Verification, inspections and performance reviews

Undertaking in-house civil and structural design and documentation

Working in such diversified consultancies for:-

Connell Wagner

Mott MacDonald (UK)

Fielder Engineers

Energy Australia

John Messih

project history

2002 - Fielder Engineers, Project Engineer / Manager

2003 - Mott-Macdonald, Structural / Project Engineer (UK, London)

2006 - Connell Wagner, Structural / Project Manager

2009 - Energy Australia Design Development Manager / Structural Engineer

2010 - Structural and Civil Engineer



Sam
Bassilious



Sam Bassilious - Architect

Professional - Bachelor of Architecture, UNSW

Sam is a Registered Architect with 24 years experience in the construction industry. He has experience in commercial, retail, hospitality, ecclesiastic and educational architectural projects.

He has been actively involved in establishing client / project brief, coordinating consultants, project documentation, contract administration and building inspections.

Sams qualifications include:

Professional

Bachelor of Architecture, UNSW

Skills

1. Registered Architect
2. Technical Due Diligence
3. Superintendence
4. Independent Certifier
5. Client Representative

Sam Bassilious

project history

Major Projects Experience

- Commercial Developments
- Educational Facilities
- Ecclesiastical Projects
- Recreational Facilities
- Registered Clubs
- Refurbishments and Fit-outs
- Retail Centres

Relevant Projects

Independent Certifier / Superintendent Duties

- American Express Office, King Street Wharf, Sydney
- 121 Marcus Clarke, Canberra
- The Ark Project, North Sydney
- The Residence Hyde Park, Sydney



Walid El Hady

General Manager / Middle East

SGS

We hereby confirm that:

Mr. Waleed El Hady

Oriental Petrochemicals Company

has successfully attended and participated in the SGS Egypt course entitled:

INTERNAL AUDIT COURSE

for ISO 14001 : 2004 JAN 2007

SGS Egypt
Training Course Instructor



System Development
Services Management
M. ZEIDAN

CERTIFICATE

This is to certify that

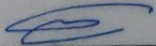
Mr. Waleed El- Hady

has successfully completed

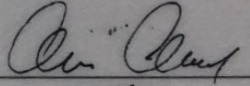
Management and Leadership Skills Development

Training Program

April 6-8, 2003


Course Tutor

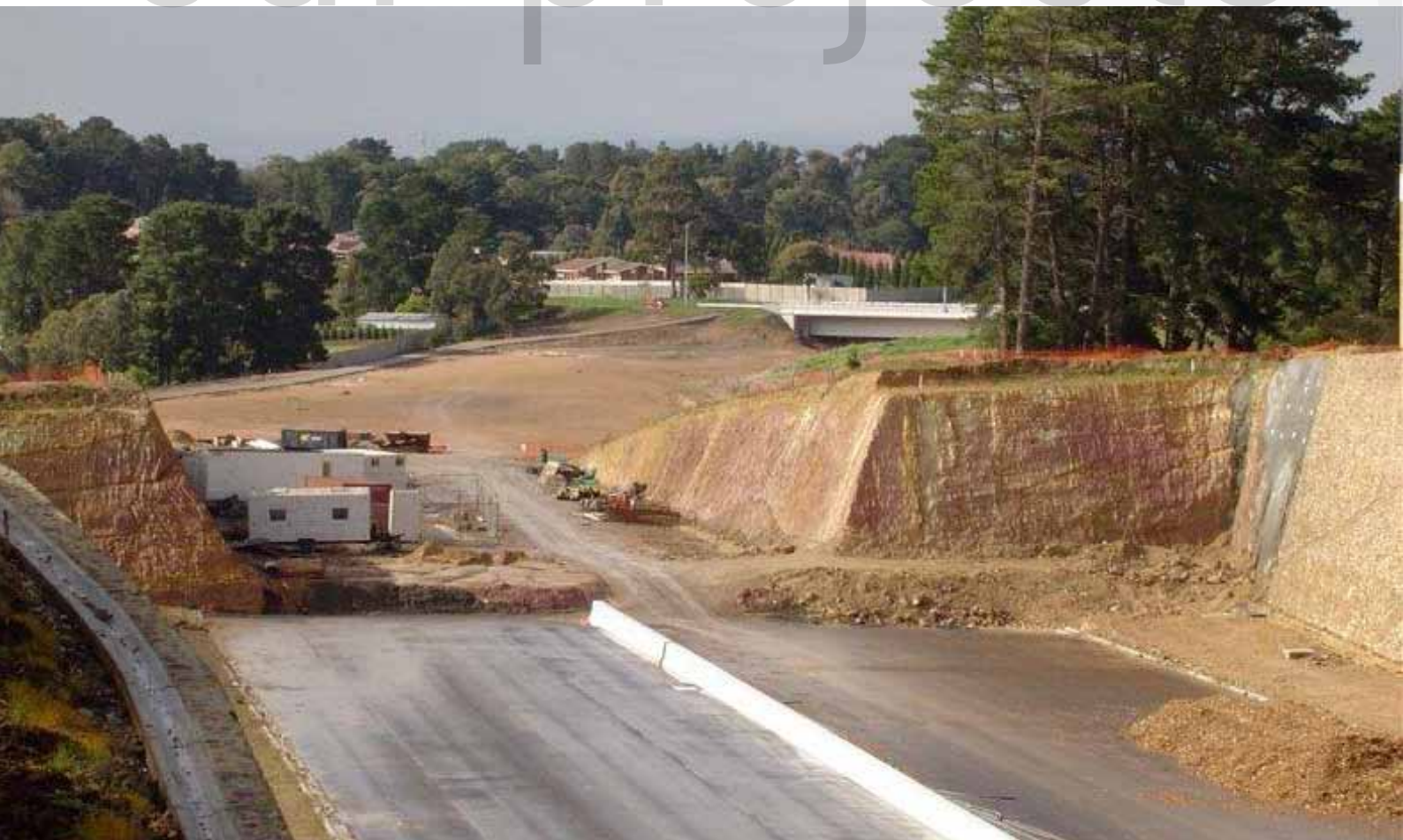

INSPECTORATE
Quality Management Systems


president



our projects

“building your future, and the future of others”



Premium Service

Interpacc has a strong reputation for constructing high quality sustainable property assets in sectors including industrial and commercial.



This project was completed some 4 months ahead of schedule 150 km's from Northern NSW.

It is considered one of the best roads in the area by many.



Pipe Laying



Laying of Stormwater Pipe in Evaton



Bluewater Desalination Plant Pipe



Stormwater Installation



Electrical Cable Laying



Before Maleny Wetlands



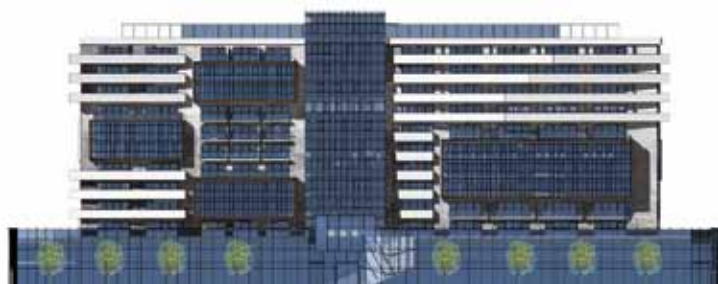


PENTHOUSE FLOOR PLAN



Marine Parade, Coolangatta, Gold Coast

25 storey beachfront at Coolangatta. DA Approval featuring 2 lower levels of Retail / Commercial. One apartment per floor with own lap pool





Mascot Hotel, Sydney

A Master Plan submission to Council for rezoning with the outcome to have a capacity for 900 rooms and a ground floor Commercial with ancillary features.





Hope Island, Gold Coast

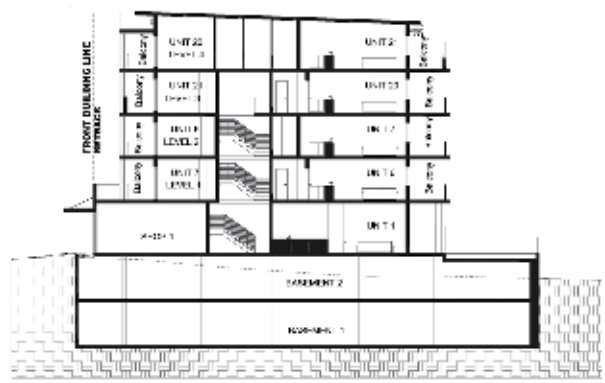
Mixed Use development comprising 190 Apartments, 15 waterfront Terraces and 7 Townhouses with Commercial facilities and Marina Berths, located on 2.5 hectares adjacent to a proposed Township Centre.



Annadale Townhouses

Designed in the 'Santa Fe' style of architecture. 18 units surrounded by Parkland and featured on TV programmes, Burke's Backyard and Wildside an ABC drama. Annadale Townhouses is the most prominent residential development in the Leichardt area.





SECTION

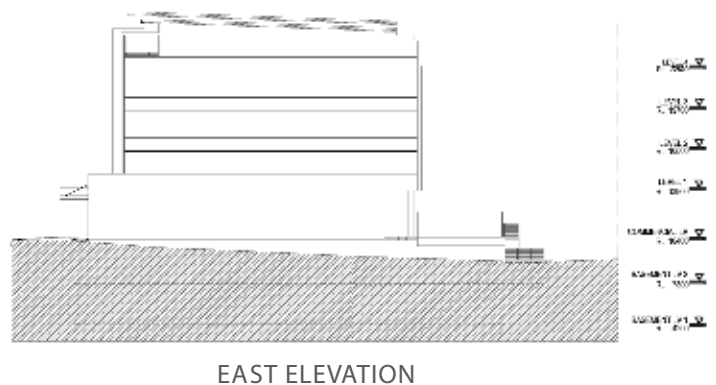
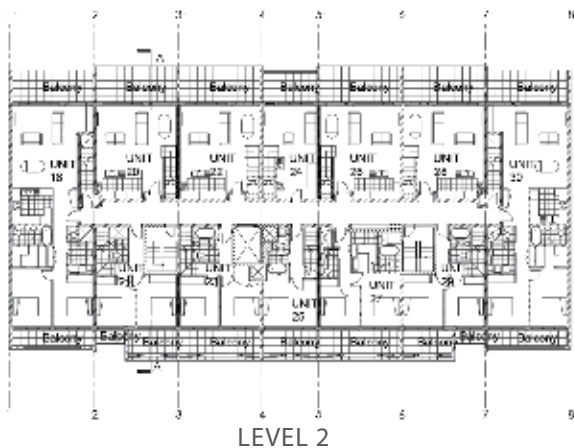


SOUTH ELEVATION



Parramatta Road, Granville

A Mixed Use development with Commercial to ground floor and 32 residential Apartments above. The project is part of a redevelopment incentive involving hardedge setbacks resulting in a well articulated design outcome.







The Entrance, Central Coast

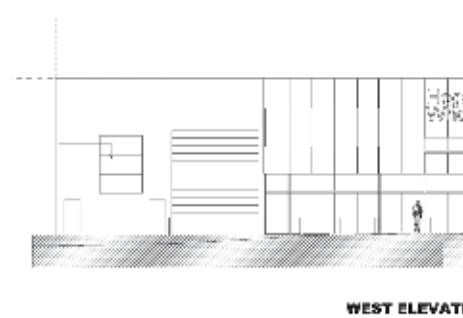
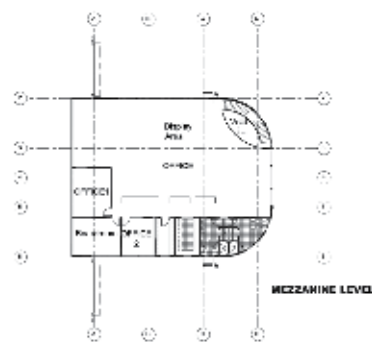
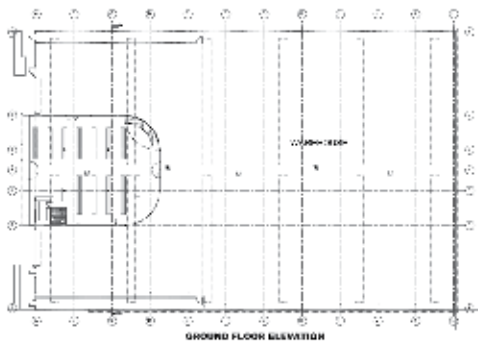
Mixed Use development with Retail/Commercial and 40 apartments some with lake and ocean views over six storeys.



Church St, Parramatta

A Commercial and Residential complex involving 73 units in the heart of Parramatta, recognised as the second largest city in Australia. Design Panel reviews included "...very well planned scheme with crossover Apartments facing north with good architectural language and well resolved architectural massing treatment."







Warehouse at Wetherill Park

The warehouse is situated in western Sydney and was purpose-built for the Client who is involved in the glass industry. The western facade features a cantilevered natural timber finish to the upper floor office located over the ground floor showroom contrasting against of form concrete walls adjacent.



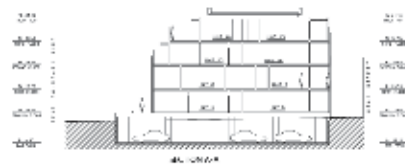


Seaforth Houses

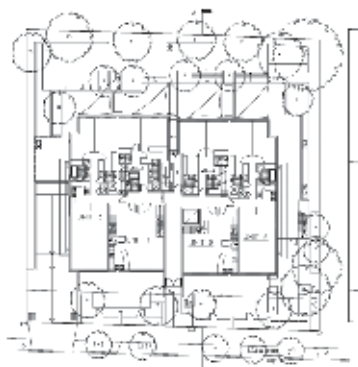
Overlooking Sydney's Middle Harbour, the design brief was to provide three individual houses maximising the potential of views to a west facing sloping site.



STREET SIDE ELEVATION



SIDE ELEVATION



SOUTHEAST ELEVATION



Kogarah Apartments

An innovative contemporary design that maximises the development potential for 20 north facing units.

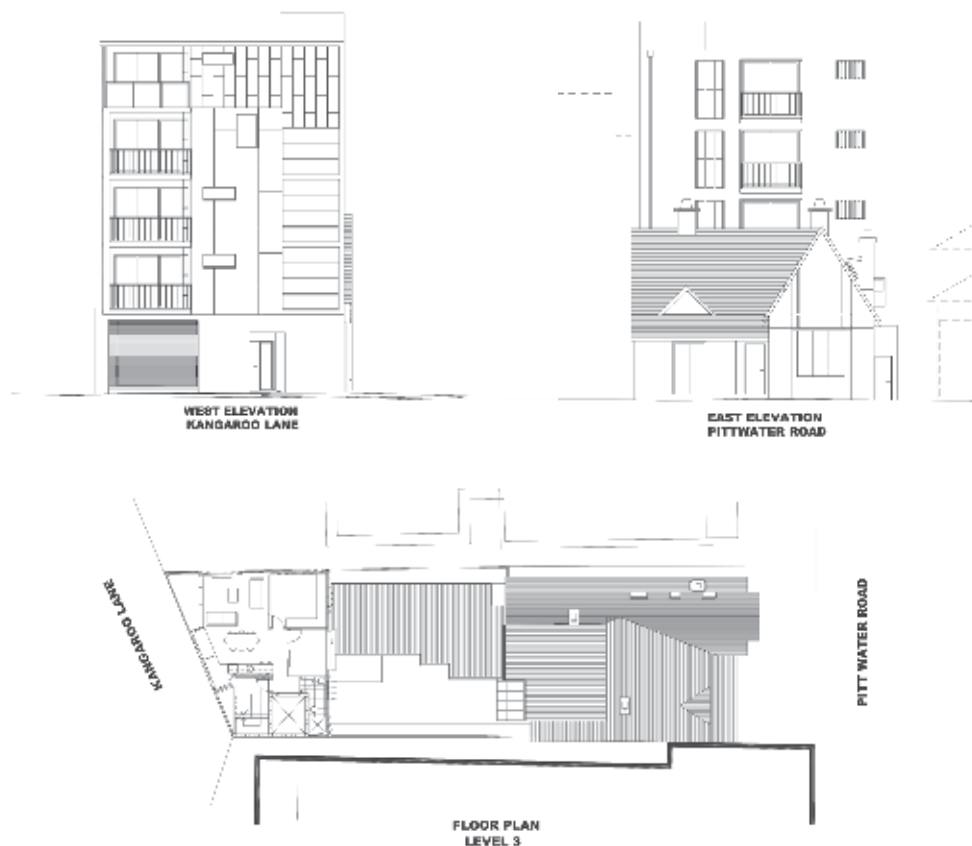


Camperdown Terrace House

The project involved a complete transformation of the internal configuration using only the existing façade and party walls and utilising new roof space to create a two storey three bedroom home with an interactive rear courtyard.



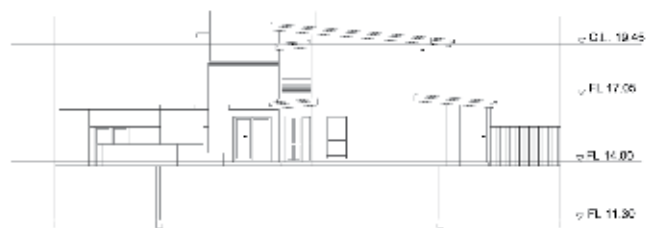
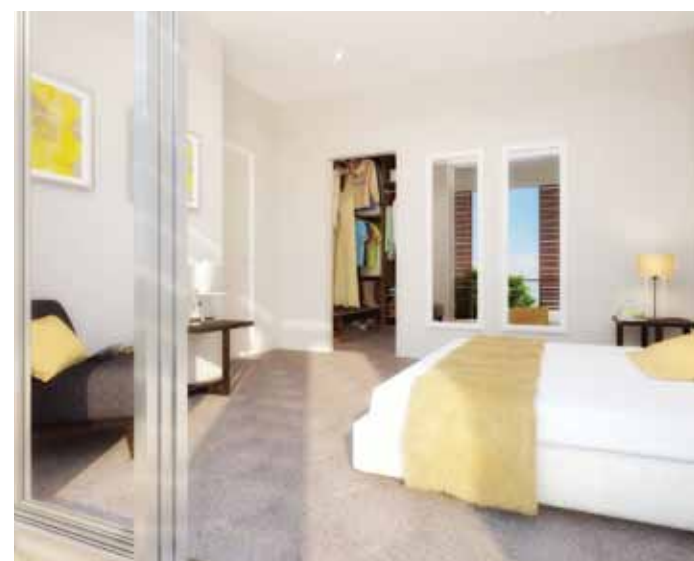




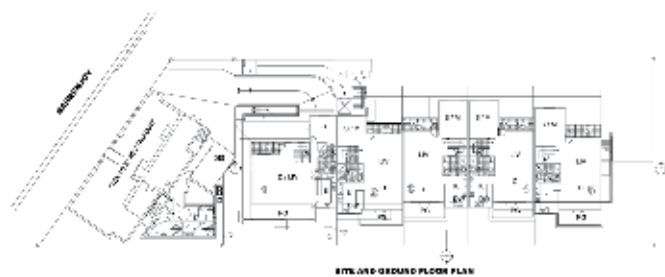
Manly Apartments

A dual frontage site with a 5 storey tower facing Kangaroo Lane behind an existing heritage house facing Pittwater Road 100 m from Manly Beach. The facade facing Pittwater Road was designed to create visual curtilage behind the Heritage item with the use of timber louvre treatment providing interest. The use of the timber louvres was generated from the timber patterned Kangaroo Lane facade cantilevered upper levels over the ground floor entry and parking.





WEST ELEVATION



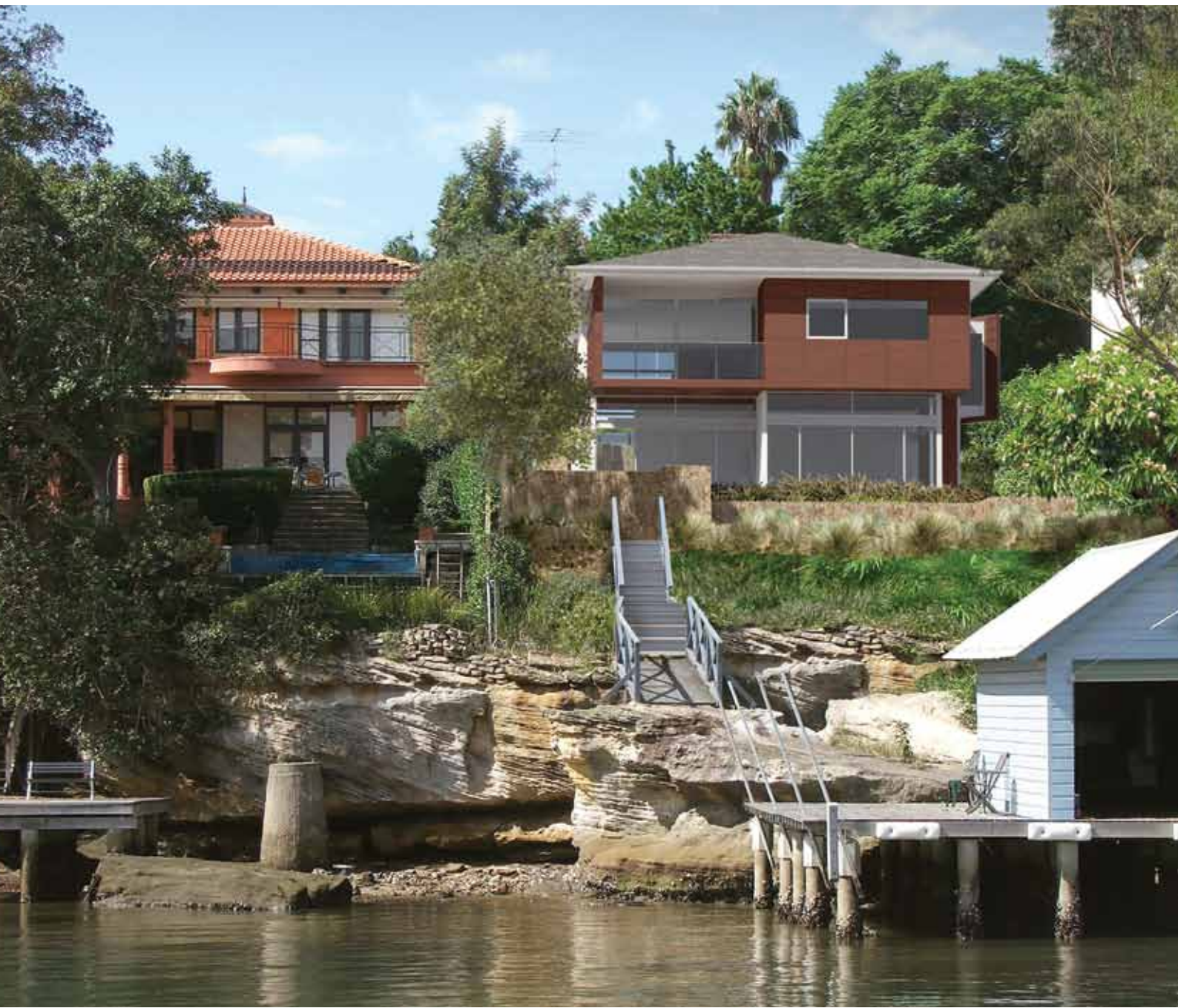
RTVLAND GROUND FLOOR PLAN

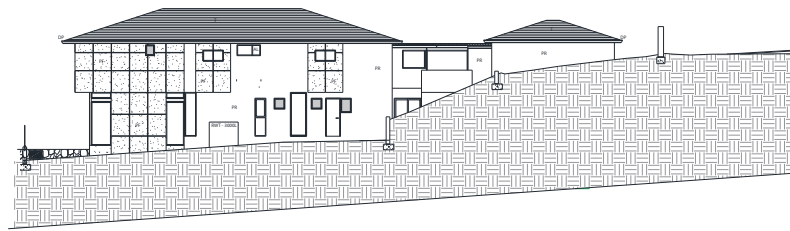


NORTH ELEVATION

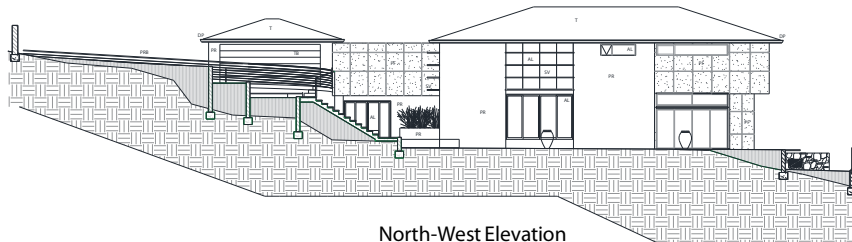
Townhouses at Mona Vale

Beach side 4 townhouses over basement parking, constructed with specialised external finishes over lightweight construction making the building aesthetically suitable to the coastal context.

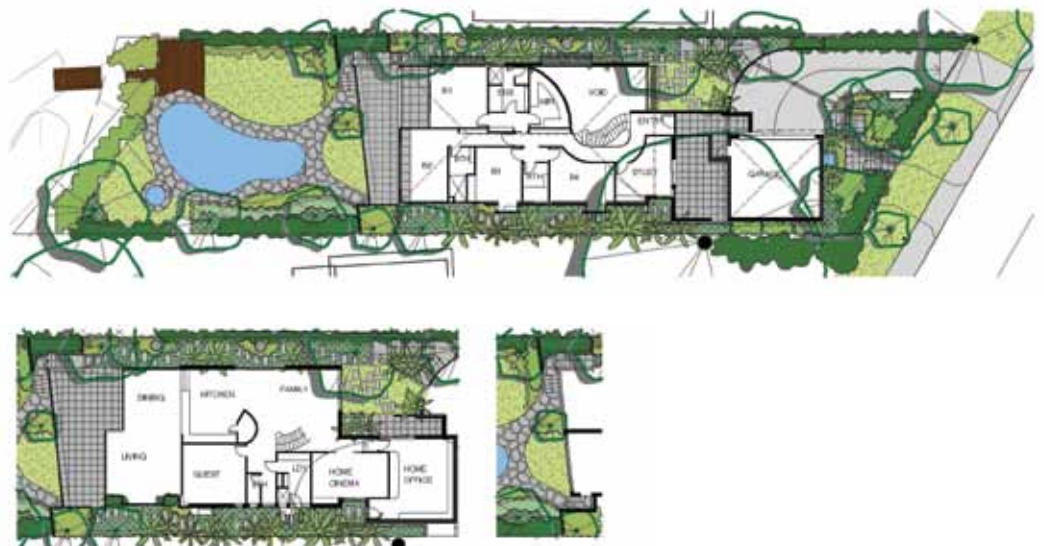




South-East Elevation



North-West Elevation



Hunters Hill House

Waterfront home designed within Hunters Hill Councils stringent design guidelines that dictate towards more traditional forms. The site faces south west on a significantly sloping site. A focal point the floating entry corridor adjacent to the garage, is set at the upper level bedroom zone with a curved stairway leading down into a double ceiling height family room that allows year round controlled direct morning sun. The dining and living areas are set three steps below the centrally located kitchen and family room, allowing clear water views from all living spaces. The master bedroom and balcony provides a large cantilevered element over the outdoor space off the dining area, providing afternoon shade and drama into the design. A simple palette of white painted render, natural timber and raw aluminium combined within meticulously designed landscape makes for a highly functional “sleeper” design.

Quality Service

We recognise the importance of providing quality service to our customers, and extend our policy to encouraging all our suppliers and consultants to apply the same principles to their operations, especially when providing a product or service to Interpacc



This project was completed in 2003. It was completed three months ahead of schedule. Interpacc received personal thanks and appreciation from the PNG prime minister for its reliability, high quality of its workmanship.



On Time

Vital to the successful delivery of any Interpacc project is the precise and timely programming of works on site and their ability to manage the construction schedule.



This project was completed in 2005. It was designed, and built by Interpacc, from clearing bushland, to a final state of the art finish including roadside landscape.



Safety

Interpacc is committed to the highest standards of Occupational Health & Safety. A range of systems, checks and programs implemented throughout the organisation enables us to achieve our goal of a workplace free of incidents and injuries.

This project was completed in 2004 in a central NSW remote area. The long distance from a major city, and other difficulties along the way didn't stop Interpacc from meeting its obligations, and commitment to complete the project as per original schedule.

This project has won the admiration of many, as Interpacc has used the latest technology in road building. The final result speaks for itself.



Ellenbrook Christian College Gymnasium

Western Australia

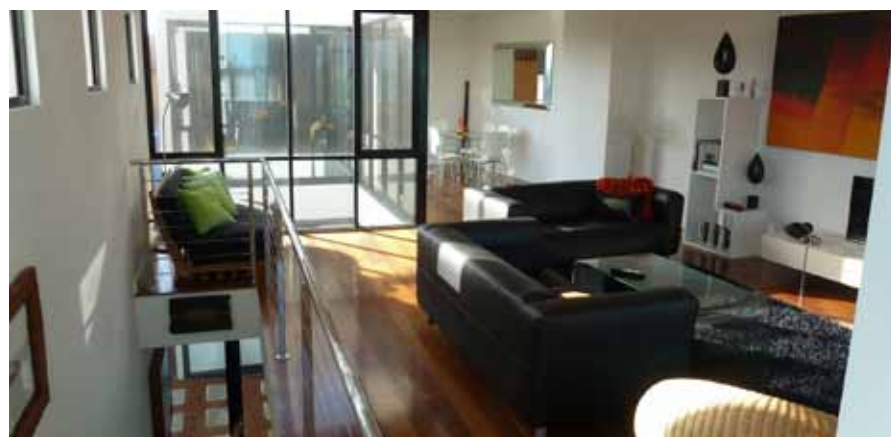
A Library and multi sports complex at Ellenbrook Christian College.





Guadalupe Hills, Scarborough

Western Australia





Angas Plains, Bletchley

Western Australia

This project was completed in 2009. It consisted of 6 townhouses in a newly built area. This job took around 8 months to complete.



The Ark Project

40 Mount Street North Sydney
19 Storey Commercial Office Building



Canberra CBD

121 Marcus Clarke Street, Canberra
12 Storey Commercial Office Building



American Express Building

1 Shelley Street, Sydney

12 Storey Commercial Office Building



The Residence Hyde Park

18 College Street, Sydney
24 Storey Residential Building
(Refurbishment of existing Commercial Office Building)



Lakeside Recreation Centre





Chirajara Bridge

We carried out the project for the study, design, and construction of a bridge over the Chirajara Creek, including its access ramps, for the National Roadway Fund, from October 6, 1992 to November 30, 1995, when it was completed.

The project included the study, design, and construction of a 933-foot long mixed-superstructure reinforced concrete bridge with four spans of 232, 309, 248, and 144 feet respectively. The bridge is 36 feet wide, which includes 3-foot wide sidewalks on either side.



Guillermo Gaviria Bridge

The project was successfully completed in February 2006, after 27 months of work. The main bridge has a 656-foot long central span that allows for ships to maneuver in and out of the Barrancabermeja multipurpose port.

As it stands it is the longest span of its type in the country.





Interpacc Global Traders has a long history of drilling oil, gas, and water wells.

Our preliminary view is that the best approach is to use highly mobile rig spreads in a “campaign” drilling programme.

A typical drilling programme would use three different rig types in a production line:

- Drill and set 10 metres of 20 inch diameter conductor casing and cement it in place using truck mounted auger rigs – 2 days each well.
- Drill 322 metres of 17½ inch diameter hole to bottom using truck mounted drilling rigs of minimum 50 tonnes capacity and set 220 metres of 12 inch diameter galvanised steel casing. (The casing is not cemented in place). Set 100 metres of 10 inch diameter steel casing below bottom of 12 inch casing to the end of the hole. Drilling will be either with drilling mud or down hole air hammer. The formation and current practices will be evaluated as soon as possible. The operation should take 2 days each well.

Typical rigs are TX130 and G55 as shown on the attached data sheets

- Use work over rigs to place gravel packs, wash and disinfect the well and place submersible pump – 2 days each well. Typical rigs are Schramm 685, UDR 1200, UDR 1000, Bournedrill 1000R, shown on the attached data sheets.

We are always ready to move quickly on any project, large or small. Our aim is to work around the clock if needed, in order to achieve maximum result, in minimum time frame.

We have numerous sophisticated rigs that will cater for all types of drilling as shown below



SCHRAMM T130XD – OPEN HOLE DRILLING RIG

Engine type:	Detroit Diesel DDC/MUT 12V-2000TA DDEC 760 bhp (567 kw) @ 1800 rpm, air starter
Cooling:	Two core, side by side type 130°F (54.4°C) ambient design temp
Dimensions:	OA length, transport – 50' (15.2 m) less tractor OA width – 9' 6" (2.9m) OA height, transport – 13' 6" (4.1m) Weight std. rig – 95,000 lb (43,181 kg)
Top Head Drive- Hydraulic Tilting:	Ductile iron, single reduction oil bath gearbox with 4 two-speed disc valve type hydraulic motors. Infinitely variable rotation speed 3.5:1 Reduction gear 4.75" diameter (120.6 mm) spindle, 3" ID swivel 0-90 rpm @ 17,750 ft-lb, 0-180 rpm @ 7,670 ft-lb 3" ID, 3000 psi fluid flushing system
Feed System:	Top head is driven by hydraulic traverse cylinders through special wire rope and large diameter Nylatron sheaves. As top head is raised, the inner mast section extends by a ratio of 1:2 until it reaches its fully extended position. 50' (15.24m) top head travel 100' /min (30.48 m/min) pull back speed-rapid feed 14' /min (7.92 m/min) pull down speed-slow feed 200' /min (60.9 m/min) pull down speed-rapid feed 52' 10" (16.1m) working clearance mast spindle to table (sub removed) 48' 10" (14.9m) working clearance floating sub to table
Pull Back:	59,090 kg (130,000 lb)
Pull Down:	14,545 kg (32,000 lb)
Mast:	Telescoping construction permits long head travel and working height, yet short OA length in transport position. 72" (1828 mm) cylinder operated slide Free-standing mast Hydraulically operated adjustable mast feet Hydraulically retracted slip box 30.25" (768mm) table opening w/o slips 124" (3.150m) working height below table
Handling Winch:	Planetary with spring applied hydraulic release brake 9,600 lb (4,354kg) bare drum line pull 151 fpm (46mpm) bare drum line speed Hydraulic jib boom swing & extend
Pipe Handling:	Lifts drill pipe and casing from horizontal position into alignment with tilting top head, racks and stores tubulars and positions blow out preventer. 47' (14.3m) tubular lengths Up to 30" (762mm) diameter casing



SCHRAMM T130XD – OPEN HOLE DRILLING RIG

Engine type:	Detroit Diesel DDC/MUT 12V-2000TA DDEC 760 bhp (567 kw) @ 1800 rpm, air starter strangler Zone compliant to API 505
Cooling:	Two core, side by side type 130°F (54.4°C) ambient design temp
Dimensions:	OA length, transport – 50' (15.2 m) less tractor OA width – 9' 6" (2.9m) OA height, transport – 13' 6" (4.1m) Weight std. rig – 95,000 lb (43,181 kg)
Top Head Drive- Hydraulic Tilting:	Ductile iron, single reduction oil bath gearbox with 4 two-speed disc valve type hydraulic motors. Infinitely variable rotation speed 3.5:1 Reduction gear 4.75" diameter (120.6 mm) spindle, 3" ID swivel 0-90 rpm @ 17,750 ft-lb, 0-180 rpm @ 7,670 ft-lb 3" ID, 3000 psi fluid flushing system
Feed System:	Top head is driven by hydraulic traverse cylinders through special wire rope and large diameter Nylatron sheaves. As top head is raised, the inner mast section extends by a ratio of 1:2 until it reaches its fully extended position. 50' (15.24m) top head travel 100' /min (30.48 m/min) pull back speed-rapid feed 14' /min (7.92 m/min) pull down speed-slow feed 200' /min (60.9 m/min) pull down speed-rapid feed 52' 10" (16.1m) working clearance mast spindle to table (sub removed) 48' 10" (14.9m) working clearance floating sub to table
Pull Back:	59,090 kg(130,000 lb)
Pull Down:	14,545 kg(32,000 lb)
Mast:	Telescoping construction permits long head travel and working height, yet short OA length in transport position. 72" (1828 mm) cylinder operated slide Free-standing mast Hydraulically operated adjustable mast feet Hydraulically retracted slip box 30.25" (768mm) table opening w/o slips 124" (3.150m) working height below table Handle range 3, pipe and casing up to 12m
Handling Winch:	Planetary with spring applied hydraulic release brake 9,600 lb (4,354kg) bare drum line pull 151 fpm (46mpm) bare drum line speed Hydraulic jib boom swing & extend
Pipe Handling:	Lifts drill pipe and casing from horizontal position into alignment with tilting top head, racks and stores tubulars and positions blow out preventer. 47' (14.3m) tubular lengths Up to 30" (762mm) diameter casing
Options:	Mud pumps Trailer mount Aux plant available for drilling application



UDR1200 Drilling Rig.



UDR1200 Drilling Rig



UDR1200 Drilling Rig.



UDR1200 Drilling Rig.



UDR1200 Drilling Rig.

UDR1200 MULTIPURPOSE CORING AND DIRECTIONAL DRILLING RIG

Engine type:	Cummins C260 8.3 engine.
Rating:	260Hp @ 2100Rpm).
Rotary system:	UDR, "D-15HD" rotation head.3-200 rpm in low gear and 200-1500 rpm in high gear. Floating spindle
Main Winch:	UDR 1200, 151.3kN (34,020 lbf) single line pull. Max speed 128m/min (420 ft/min)
Wire Line Winch:	6mm x 2400 meters wire rope capacity.
Water Pump:	The FMC W1118D pump producing 250 LPM @ 2000PSI.
Safe T-Spin:	Make/break/pre-torque tool for BQ, NQ, HQ and HW wire line drill rods sizes.
Rod Handler:	For handling all 3" to 4 ½" R/C drill rods from either an onboard tilting rod bin or from a suitably positioned support truck. The rod handler control system is via a pilot hydraulic control system.
Work Platform:	A folding work platform fitted to the mast base. This platform is designed to suit the UDR1200 fitted with safety spin, rod handler etc.
18" Slips Table:	An 18" Slips table bolted to the bottom of the mast structure includes one set of slips.
Control Cabinet:	A modified micro feed system to provide micro feed control in the upwards direction will be fitted to the control cabinet.
40K Water Swivel:	Replace the standard 25K water swivel with the larger 40K water swivel to allow better water flow through the swivel.
Booster Valving:	An air compressor outlet point and inlet point with valving to supply an air booster or auxiliary air compressor. Complete with hose restraint mounting points and dust caps.
Fire Suppression:	A fire suppression system fitted to the rig engine. Systems are fitted in accordance with the Australian Standards for fire suppressions systems.
Expanding Front Jack legs:	Laterally expanding front jack legs to allow the truck or trailer to be easily removed from under the drill. The two front jack legs are also a longer 1800mm stroke.
Pull Down:	25000 IBF
Pull Back:	50700 IBF
Max Torque in low gear:	10357ft LB



DRILLMEC G55

Carrier:	Semi Trailer Tri Axle (AD 54 DF Reg. NSW)
Gross Weight:	41,000 kg
Rig:	Drillmec G55
Engine:	Deutz BF8M 508 HP @ 2200 R.P.M., Silenced Unit
Air System:	Rig mounted air inlets with maximised use of hard plumbing 3000 P.S.I. A.P.I. rating on system
Mast:	G55-55 Tonne S.W.L.
Top Head Rotation:	3 Speed 0 – 153 R.P.M.
Pull Down:	12,896kg (28,373lbf)
Pull Back:	55,475kg(122,047lbf)
Maximum Torque:	2400 kg/m
Feed System:	Telescopic hydraulic system suitable for Range 2 rods and Range 3 casing 12 M head traverse Tilting power swivel
Hydraulics:	A combination of open loop and closed loop high pressure system 1000 ltr Hydrualic oil tank
Water Injection:	Hydraulic driven FMC 4120 20 GPM @ 700 P.S.I.
Winches:	Jib boom remote control operation Max. pull 4000 kg Planetary with spring
Drill Pipe Break Out:	Hydraulic double clamp Max. torque 6500 kg/M Max. load 40,000 kg Opening 23"
Levelling:	5 Hydraulic levelling jacks Max. elevation 1.415 metres



SCHRAMM 685WS

Mast:	<p>Tubular steel, all welded, lattice type structure 10.8 m OA length</p> <p>Dump stroke – 1.50m Drill angle fixing – 90° to 45°</p> <p>Four 254mm crown sheaves for kelly and hoisting lines</p>
Main Haul Winch:	<p>Maximum pull 1200kg</p> <p>Planetary with spring applied hydraulic release brake.</p> <p>Maximum speed 60m/min</p> <p>Wire rope capacity: 30m x 19mm NSW</p>
JIB Boom:	<p>Hydraulically swings 140°, retracts and extends 1.02m</p> <p>Maximum pull 750kg bare drum</p> <p>Maximum speed 300m/min full drum</p> <p>Wire rope capacity: 700m x 6mm</p>
Rotary Head:	<p>Ductile iron, single reduction oil bath gear box with two disc valve type hydraulic motors.</p> <p>Infinitely variable rotation speed. 3" diameter (76.2 mm) spindle thru hole 0-104 rpm, infinitely variable</p> <p>17,083 Nm Maximum torque floating sub</p> <p>Top head driven by hydraulic cylinders through heavy roller chain</p> <p>9.1 m head travel</p>
Pull back force:	33955kg(74,701lbf)
Pull down force:	15,833kg(34,833lbf)
Hydraulic System:	<p>Twin mast raising cylinders with flow restrictors</p> <p>Four (4) corner mounted hydraulic jacks, fully enclosed in square tubing</p>
Water Pump:	FMC model W1122BCD 140 Lts/min @ 69 Bar
Welder:	Oxy/ acetylene gas cutting equipment
Communications:	UHF two way radio CB, VHF high band two way
Safety:	<p>KL rod loading system. Interlocking rod spin guard</p> <p>Noise attenuation cabinet</p> <p>Fire suppression fitted</p> <p>Level 2 first aid kit</p> <p>9kg dry chemical fire extinguisher</p>
Depth Capacity:	1500m slim hole



BOURNEDRILL 1000R

Mast:	<p>Maximum capacity rating 15890kg (35000lb)</p> <p>10.37M overall length</p> <p>Four 254mm crown sheaves for kelly and hoisting lines</p>
Draw Works:	<p>Single line capacity 4545kg (10000lb)</p> <p>Air clutches: twin disc PO311</p> <p>Brakes: 101 mm x 406 mm diameter single band</p> <p>Spooling: 51.8m 14 mm NSW</p>
Kelly:	<p>95 mm diameter x 7m with three 25.4 mm round flutes – reversible</p>
Rotary Table:	<p>Air clutch: twin disc PO308</p> <p>190mm hexagonal opening</p> <p>Up to 250 RPM</p> <p>400mm retraction</p>
Pull Down:	<p>Hydraulically controlled mechanical activated through a 4 speed gearbox, pressure compensated variable pull-down</p>
Hydraulic System:	<p>Variable volume piston pump 94 lt/min @ 140Bar direct coupled to transfer case</p> <p>Twin mast raising cylinders with flow restrictors</p> <p>Four (4) corner mounted hydraulic jacks, fully enclosed in square tubing</p>
Bournedrill 5x6 Mud Pump:	<p>Maximum capacity 757Lt/min at 21 Bar (100 strokes/min)</p>
Water Injection Pump:	<p>Silvan diaphragm APS 71: 71 Lts/min @ 40 Bar</p>
Communications:	<p>UHF two way radio CB</p> <p>VHF high band two way</p>
Depth Capacity:	<p>400m slim hole rotary air</p>



UDR 1000 MK VI

Mast:	<p>9.0M rod pull capacity</p> <p>Dump stroke – 1.3m</p> <p>Drill angle fixing – 90° to 45°</p>
Main Haul Winch:	<p>Maximum pull 122.7 kN</p> <p>Maximum speed 120m/min</p> <p>Failsafe brake mechanism</p> <p>Hoist travel limiter</p> <p>Wire rope capacity: 30m x 19mm NSWR</p>
Wireline Winch:	<p>Maximum pull 21.4kN bare drum</p> <p>Maximum speed 430m/min full drum</p> <p>Wire rope capacity: 1500m x 6mm</p>
Rotary Head:	<p>UDR D15 two speed gearbox</p> <p>Low gear 14300Nm @ 73rpm</p> <p>High gear 960Nm @ 1000rpm</p>
Pull back force:	11,445kg(25,179lbf)
Pull down force:	7152kg(15,736lbf)
Hydraulic System:	<p>Twin mast raising cylinders with flow restrictors</p> <p>Four (4) corner mounted hydraulic jacks, fully enclosed in square tubing</p>
Mud Pump:	<p>CenterLine CLM 7 ½ x 10 maximum capacity 560 Lt/min at 21 Bar (40 Strokes/Min)</p>
Water Pump:	FMC Model W1122BCD 140 Lts/min @ 69 Bar
Welder:	Oxy/ acetylene gas cutting equipment

**Interpacc Global
Constructions
& Drilling**



Work Capacity and Experience Egypt Water Well Program



Company Overview

Interpacc Global Constructions & Drilling is an independent drilling company providing services to the mining, water and coal bed methane industry, government and private agricultural clients.

Interpacc Global Constructions was established in 1993

Interpacc Global Constructions & Drilling currently owns a fleet of operational Drill Rigs accompanied by a wide range of support vehicles and equipment including trucks, light vehicles, dog trailers, semi-trailers, tilt trays, compressors, backhoes, cementing units, gen-sets, portable camps etc. All equipment is outright owned by the company.

The company currently employs around 80 full time staff, based on a 13 acre premises in Sydney and Rockhampton where a fully equipped Workshop is utilised to service and repair all equipment as required. The workshop has qualified welding, fitting, panel beating and lathe personnel to keep all equipment maintained in first-rate condition.

Interpacc Global Constructions & Drilling is committed to completing each and every job to the total satisfaction of our clients, by only operating in a safe and professional manner. Interpacc Global Constructions & Drilling acknowledges that health and safety is an ongoing commitment for both employees and management, and achieving safety objectives requires teamwork and the consistent application of safety standards.

Interpacc Global Constructions and drilling's experience includes Exploration Drilling on Greenfield and Developed leases, through to Large Diameter, Service and Goaf holes on operating mine sites.

Client Project Analysis

Interpacc Global Constructions currently undertakes drilling for most of the major companies including; BMA, Rio Tinto, Peabody Energy, Cockatoo Coal and Eagle Downs.

Interpacc Global Constructions & Drilling has been working with companies of this calibre for more than two decades developing and improving techniques to deliver an accurate and professional service. Interpacc Global Construction has earned a reputation for our safe, high quality work which can be achieved ahead of schedule.

The table below provides an outline of Interpacc Global Construction's exploration drilling experience

Client	Project description	Description of work carried out
Anglo Coal –	Exploration	Programs were successfully completed by the required timelines
	Water Bores	Interpacc Global Constructions & Drilling has successfully completed a number of groundwater monitoring bore installations
Rio Tinto –	Exploration	Program is currently running to schedule
	Water Bores	Interpacc Global Constructions & Drilling has successfully completed a number of Ground water monitoring bore installation programs
	Ventilation and Service hole Drilling	Completed Large Diameter Ventilation and Service hole installations on for Mine Expansion

Ellinsfield Coal, Cockatoo Coal, Macarthur coal Peabody Energy,	Exploration	Programs on various sites to complete the programs by the required site completion dates
	Water Bores	Interpacc Global Constructions & Drilling has successfully completed a number of Ground water monitoring bore installation programs
BMA	Ventilation and Service Hole	Large Diameter Dewatering, Ventilation and service hole drilling. Programs all completed ahead of schedule
- Blue Energy - Pure Energy - Belvedere Coal - Metgasco - Red Sky - Sentry Petroleum - Arrow Energy	Gas Drilling program	Completion of gas exploration drilling to depths of 1800m. All programs complete within required timeframes
Xstrata	Exploration	Completion of program and down-hole monitoring equipment
Queensland Government	Water Bores	Installation of groundwater monitoring bores and water bore production.

Drill Rig overview – Egypt Project

Table of Rigs and Capabilities initial stage - 2 rigs

Drill Rig	Drilling Rig Description	Capability	Depth	Pumps
UDR1202	UDR 1200 truck mounted 8x4	Gas compliant, Water bores, Diamond Core, Chip, Lox	1800m	Triplex
UDR1201	UDR 1200 truck mounted 8x4	Gas compliant, Water bores, Diamond Core, Chip, Lox	1800m	Triplex

resources

certificates, licences and other important documents



PO Box 972
Parramatta NSW 2124
Tel 13 32 20 Fax 02 9895 9956
ABN 81 913 830 179
www.fairtrading.nsw.gov.au



**Fair
Trading**

166
INTERPACC PTY LIMITED
PO Box 889
LIVERPOOL NSW 1871

Receipt No: 1-1167035328
Receipt Date: 07/08/2014
Receipt Amount \$1857.00
Licence Number 238877C

Dear Licence Holder,

Please find attached your Contractor Licence card.

Your rights as a Contractor Licence holder are:

- You may contract and advertise to carry out work for which the licence has been issued;
- You have access to the Consumer, Trader and Tenancy Tribunal to resolve disputes with licensed contractors, suppliers, manufacturers and consumers.

Your statutory responsibilities as a Contractor Licence Holder are:

- All work where the reasonable market value of the combined labour and material costs exceed \$1,000 must have a written contract;
- All contracts must show the names of the contractor and the consumer and must include the licence holder's name, licence number, contract price, plans and specifications (where applicable) and relevant warranties required by the *Home Building Act 1989*. You can download a contract for free from the Fair Trading website;
- You are not permitted to request a deposit for more than 5% where the contract price exceeds \$20,000 or 10% when the contract price is \$20,000 or less.



238877C

PLEASE SEE OVER FOR MORE IMPORTANT INFORMATION
A division of Department of Finance & Services



MACQUARIE UNIVERSITY
SYDNEY, AUSTRALIA

By authority of the Council

KARL DAMIEN

was admitted to the degree of

BACHELOR OF COMMERCE - ACCOUNTING

on the fifth day of April 1985



Di Heiburny
VICE CHANCELLOR

Reginald
REGISTRAR (AND VICE PRINCIPAL)



Attorney General's
department of nsw

**JUSTICE OF THE PEACE
CERTIFICATE OF APPOINTMENT**
Justices of the Peace Act 2002

This is to certify that

KARL DAMIEN

has been appointed as a Justice of the Peace in and for the State of New South
Wales in accordance with section 4 of the Justices of the Peace Act 2002.

DATE OF APPOINTMENT: 15 November 2006

REGISTRATION NUMBER: 175174

APPOINTMENT VALID TO: 14 November 2011



A handwritten signature in black ink, likely of Bob Debus, the Attorney General.

BOB DEBUS
ATTORNEY GENERAL

TOASTMASTERS INTERNATIONAL

CERTIFIES

KARL DAMIEN

AS A

Charter Member

of

an officially chartered Toastmasters Club with
privileges and responsibilities of active membership.



CLUB NUMBER
6737-70

PRESIDENT

DATE
September 29, 1987

EXECUTIVE DIRECTOR




The Australian Insurance Institute.

GRANT IS TO CERTIFY THAT
Karl Damien

of **Gold Coast**
has qualified for and been granted
a **Diploma in General Insurance** of
The Australian Insurance Institute.

Given under the Seal of the Institute
at Melbourne, this **15th** day of **February** 19**85**


President.


Member of Council.


Chief Executive Officer





**ENGINEERS
AUSTRALIA**

This is to certify that

John Messih

has been elected

Member
Chartered Professional Engineer
of
ENGINEERS AUSTRALIA
in the
Civil and Structural Colleges

22 January 2004

Witness our Hands and Seal

National President

Acting Chief Executive



2135590



UNIVERSITY OF TECHNOLOGY, SYDNEY

By the authority of the University Council

John Messih

has today been admitted to the degree of

Bachelor of Engineering in Civil Engineering

to certify which the Seal of the University is affixed this

Twenty-ninth day of September 1999

Chancellor

Vice-Chancellor

Registrar



669444

NATIONAL PROFESSIONAL ENGINEERS REGISTER

Registered Professional Engineer

This is to certify that:

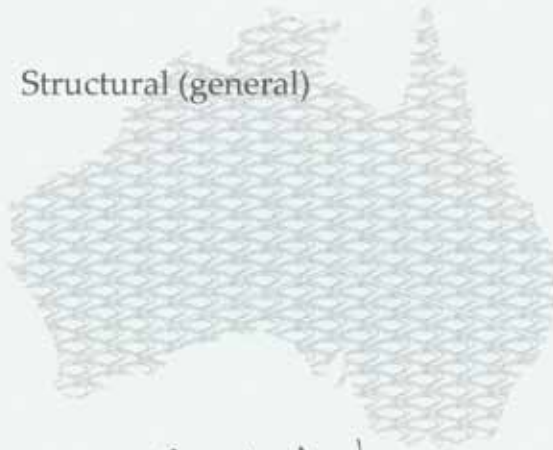
John Messih

MIEAust CPEng

has been registered in the following areas of practice from the dates shown

Structural (general)

22/01/2004



Chair, National Engineering Registration Board

Registrar, National Engineering Registration Board

Government, community and profession cooperating to maintain national registers in the community interest

For details see - <http://www.npe.org.au/registers/nper/index.html>



THE ASSOCIATION OF PROFESSIONAL ENGINEERS,
SCIENTISTS AND TECHNOLOGISTS, AUSTRALIA



Certificate NOT valid without current membership card that states "National Professional Engineers Register (NPER)" against "REGISTRATION" in the left hand column.

This certificate is evidence that at the time of assessment the person named on the certificate demonstrated the qualifications and experience to practice competently in the stated area(s) of practice.

When taken in conjunction with a current practice card the certificate also provides evidence of continued practice in the stated area(s) and a commitment to ethical standards and continuing professional development that is satisfactory to the profession.



NPER

NATIONAL PROFESSIONAL
ENGINEERS REGISTER

The National Professional Engineers Register is administered by
The Institution of Engineers, Australia

(This certificate does not imply membership of any of the sponsoring professional bodies)

2135590



The
Institution of Engineers,
Australia

This is to certify that

John Messih

has been elected

Member

of The Institution of Engineers, Australia

4 December 2000

Witness our Hands and Seal

National President

Chief Executive



2135590



THE UNIVERSITY OF
NEW SOUTH WALES

THIS IS TO CERTIFY THAT

SAMY EMILE BASSILIOUS

HAS THIS DAY BEEN ADMITTED BY THE COUNCIL
TO THE DEGREE OF

BACHELOR OF ARCHITECTURE

John J. Kinnear
CHANCELLOR

L. Michael Birt
VICE-CHANCELLOR

BY AUTHORITY OF THE COUNCIL THE SEAL
OF THE UNIVERSITY IS HEREUNTO AFFIXED
THIS TWENTY-NINTH DAY OF APRIL 1986

John Gannon
REGISTRAR

References

Steve Malesev - Managing Director of Champion Constructions
Tel: (02) 9825 8000

Peter Grippaudo - Managing Director of Fowler Constructions
Tel: (02) 9757-2300

Romeo Tamburi - Managing Director of Firststyle Constructions
Tel: (02) 9601-0111

Ps Graeme Ritchie - Nollamara Church of Christ
Tel: (08) 9349 1355

Mr Harry Buist - Reformed Church in Australind
Tel: (08) 9720 154

Mr Stuart Robinson - Cornerstone Christian College in Busselton
Tel: (02) 9754 1144

Mr. Costi Vasili - NSW Market Group Leader Industrial Division Connell Wagner
Tel: (02) 9465 5832

Mr Kenneth Bunker - Divisional Director, Mott MacDonald
Tel: (+44) 20 8774 2578

Mr David Murrant - Director James Rose Consulting
Tel: (02) 9555 8588

ACN: 062 851 496
ABN: 33 062 851 496

2/32 Williamson Road
Ingleburn NSW 2565

P.O. Box 889
Liverpool NSW 2170

Tel: + 61 2 9608 1000 Fax: + 61 2 9608 1100

Email: kdamien@interpacc.com.au
www.interpacc.com.au





www.interpacc.com.au